

# Waterfront Pavilion

The museum's Waterfront Pavilion hosts two architecturally-designed world-class function spaces: The Lookout (an outdoor rooftop) and The City View Room (interactive gallery space). Both are stylish cocktail venues with natural light and sweeping city views. Adjacent to the Naval Destroyer HMAS *Vampire*, the pavilion is a perfect wet weather option offering a unique waterfront experience.

# MUSEUM

AUSTRALIAN NATIONAL  
MARITIME MUSEUM

## Venues





# Waterfront Pavilion

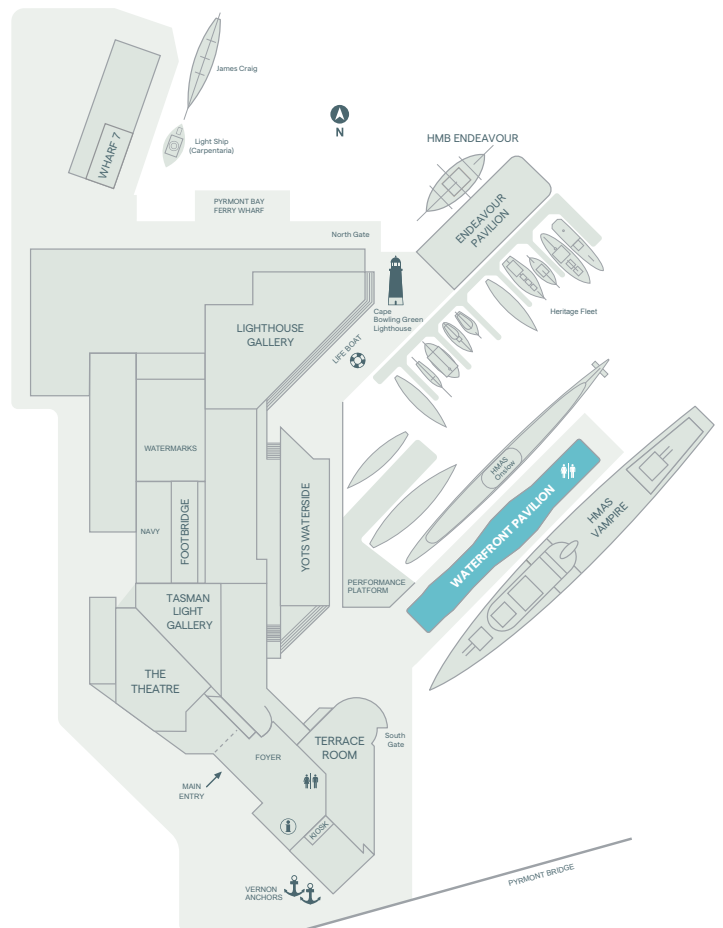
Nestled between HMAS *Onslow* (Navy submarine) and HMAS *Vampire* (Navy Destroyer), the City View Room features floor-to-ceiling windows offering stunning city views. A signature of the space are the architecturally designed “Big Ass Fans”, creating a perfect atmosphere for summer cocktails.

## CAPACITY

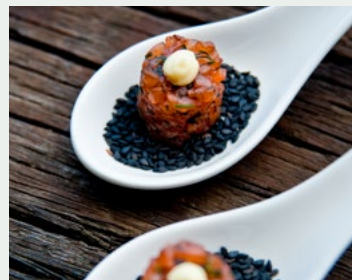
<b>The City View Room</b>	
Cocktail	130
<b>The Lookout</b>	
Guests	80

## FEATURES

- Stunning architectural design
- Absolute waterfront location
- Interactive museum experience
- Adjacent to ex Royal Australian Navy vessels



Our award-winning caterer Laissez-faire sources fresh, local and seasonal produce for your event.



## AUSTRALIAN NATIONAL MARITIME MUSEUM

2 Murray Street, Sydney | 02 9298 3649 | [venues@sea.museum](mailto:venues@sea.museum) | [sea.museum/venues](http://sea.museum/venues)